

Boyer River

Before the Boyer River was straightened in Harrison County in 1910-1911, the river meandered back and forth over its floodplain in the valley. One of the bends carried it under the CN&W tracks, just north of the entrance of the present Missouri Valley - Logan Golf Course and Country Club. It was at that point that Thomas A. Burling filled the water tenders of his engine on a daily basis.

Source: "The Burlings of the Northwestern," A.H. "Buzz" Burling

June 1906

AN effort should be made, and soon, to transform the Boyer river, particularly in Harrison county, into a more perfect channel than it now is. For years the river has been gradually filling up until now the bed is so shallow that it cannot carry off the water without inundating the farming lands along the bottoms. It takes only a casual observer to discover the truth of this. Years ago the people along the bottoms of the Boyer were troubled but little with overflow of the water. Now it takes but an ordinary rain or two to throw the river out of its channel and onto the lower lands along its course. Time has been assisted by the carelessness or neglect in bringing this condition of affairs about. The small streams leading into the Boyer have for years been carrying down their quota of mud, until the channel of the Boyer has been filled several feet, and this, together with the fact that trees and brush have been allowed to fall into the stream and allowed to remain there, has put the Boyer out of commission as a water course. And this overflow has caused great loss from time to time to farmers who happen to till the soil within its range. Now that the matter of drainage is interesting to the people of this county, it might be well to consider

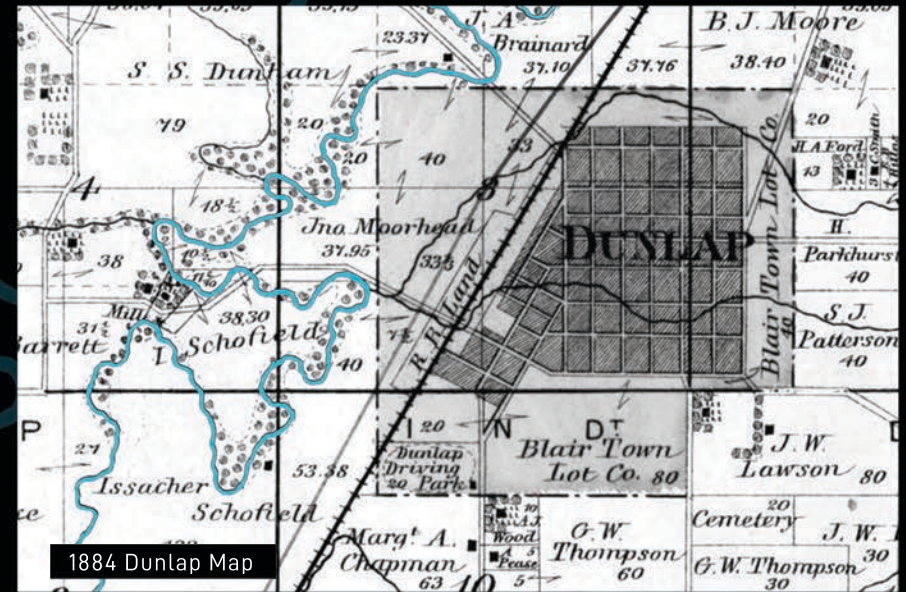
the matter of straightening the Boyer and make it into a channel that will perform the work of carrying off the surplus water that happens to come its way. By a systematic straightening of the stream the Boyer could be made a useful instead of an annoying stream. There are places where alteration of its course would make a difference of two miles, and from this it will be readily seen that these conditions make impossible the carrying off of surplus water, whereas if the channel was straightened the water would find a ready outlet and avoid the danger of an overflow. Crawford county should be as much interested as Harrison, and it

April 1909

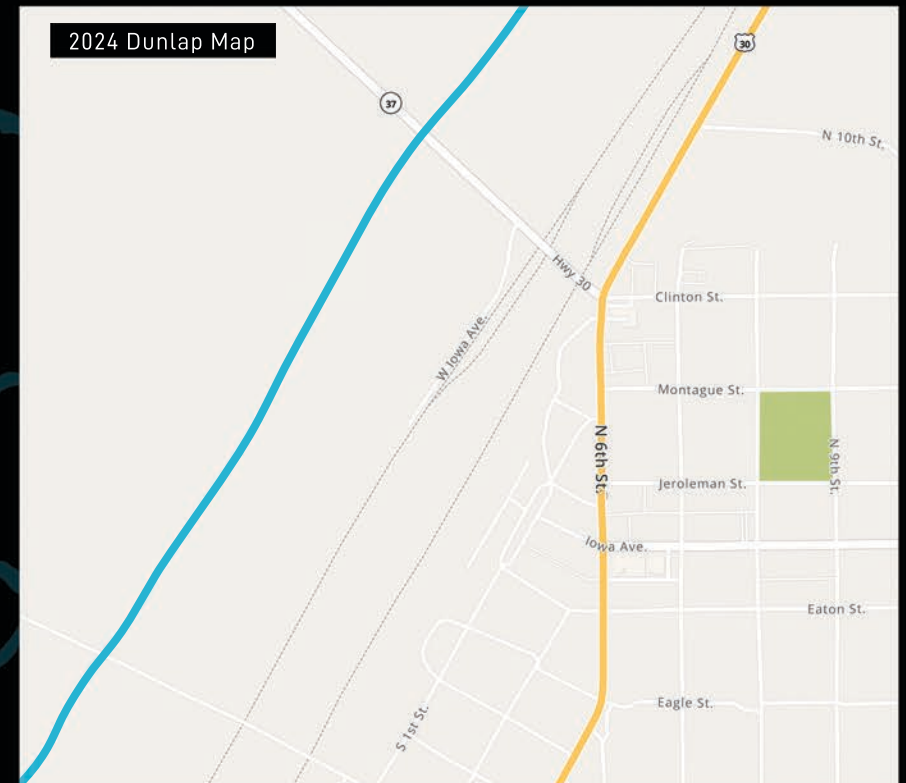
Plan Boyer Ditch Past Dunlap.

The land owners in the Boyer bottom in this vicinity have been talking of straightening the course of the Boyer river for several years and it is said this work would have been a reality before now had there been a proper outlet for the water. Now that the farmers in the lower end of the county have arranged to have the outlet constructed our people have had the survey made and the necessary legal formalities will be gone through with at once so that actual work on this portion of the ditch can be begun as soon as contracts are let for that portion in the vicinity of Logan. The survey from the Crawford county line to Missouri Valley shows the distance to be a little less than thirty miles and having a fall of ninety feet, thus giving the newly made river a drop of three feet to the mile. The natural course of the river is more than twice that distance which would make the present fall a little over one foot to the mile. With the force added by this increase in fall it will be an easy matter for the river to drain the entire valley and add several thousand acres to the tillable lands of the county.

Source: The Dunlap Reporter



1884 Dunlap Map



2024 Dunlap Map